

ENGINEERING

Floorboard Installation Procedure

PROC-000002

(Version A)



Table of Contents

1. Version History	3
2. Overview	3
3. Included in Kit	4
4. Required Tools	4
5. Procedure.....	5

1. Version History

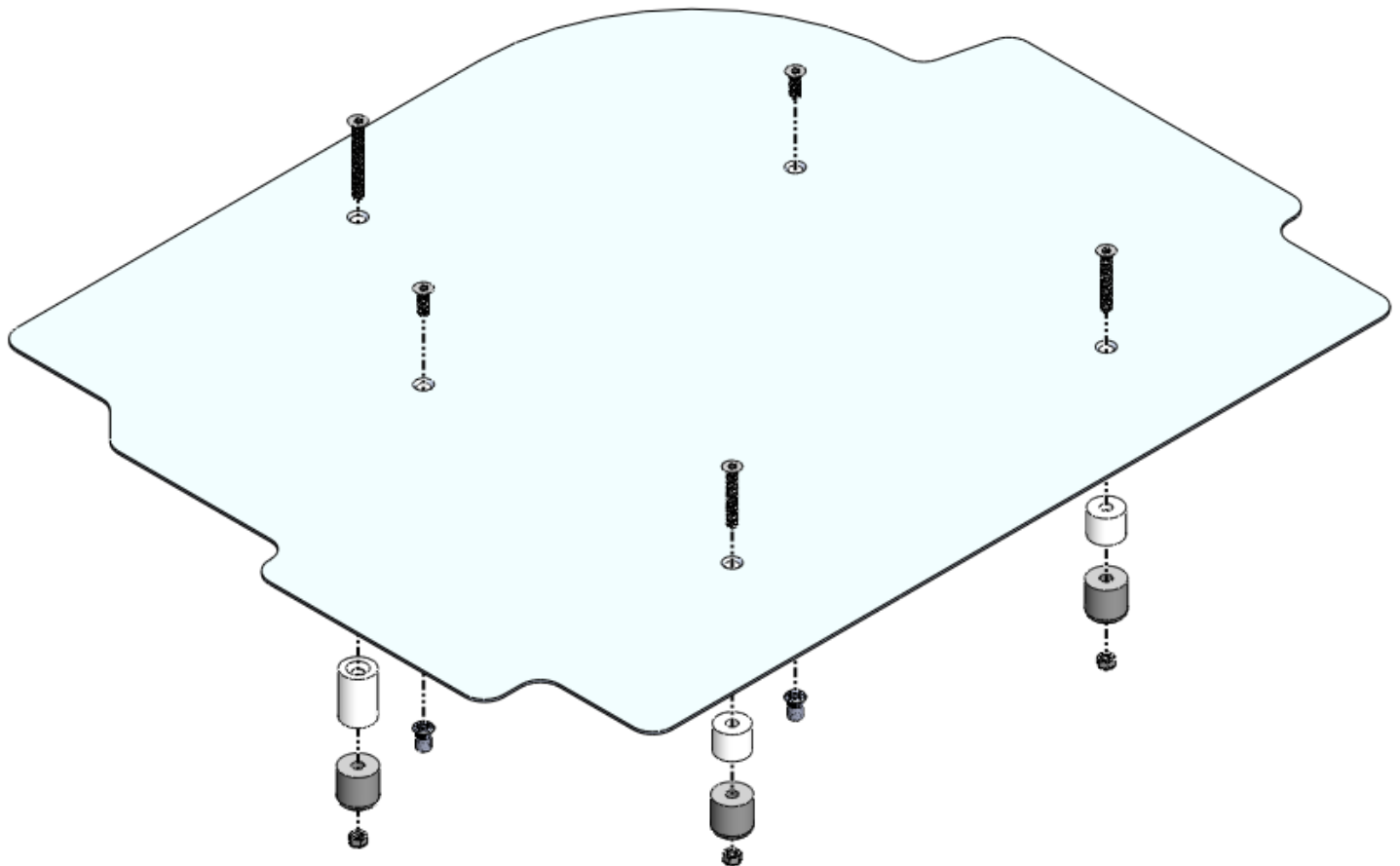
Version	Description	Name	Date
A	Initial Release	Pat Derkacz	2020-01-12

2. Overview

This procedure goes over the installation of the IXXI pedal board into a 964 Carrera 2/4

Number of required personnel: 1

Estimated time required to complete: 1 hour





3. Included in Kit

Part #	Description	Quantity
103-IXXI-964-0002	964 Driver Side Floor Board	1
103-IXXI-964-0003	964 Passenger Side Floor Board	1
119-HRDW-000-0003	Unthreaded Bumper Heavy Duty, SBR Rubber, 13/16" OD, 13/16" High	6
119-HRDW-000-0005	Floor Board Spacer - Short	4
119-HRDW-000-0004	Floor Board Spacer - Long	2
119-FAST-FLT-M605	18-8 SS Hex Drive Flat Head Screw M6 x 50mm	2
119-FAST-FLT-M604	18-8 SS Hex Drive Flat Head Screw M6 x 35mm	4
119-NUTS-HEX-M601	Medium-Strength Steel Zn Plated Nut M6 x 5mm High	6
119-FAST-FLT-M602	18-8 SS Hex Drive Flat Head Screw M6 x 15mm	4
119-NUTS-RIV-M601	Zn Plated Rivet Nut M6 - 5-3.3 mm Material	4

4. Required Tools

Equipment/Items
Electric Drill
23/64" (10mm) Drill Bit
Flat head screwdriver
Blue Loctite
4mm Allen Key

5. Procedure

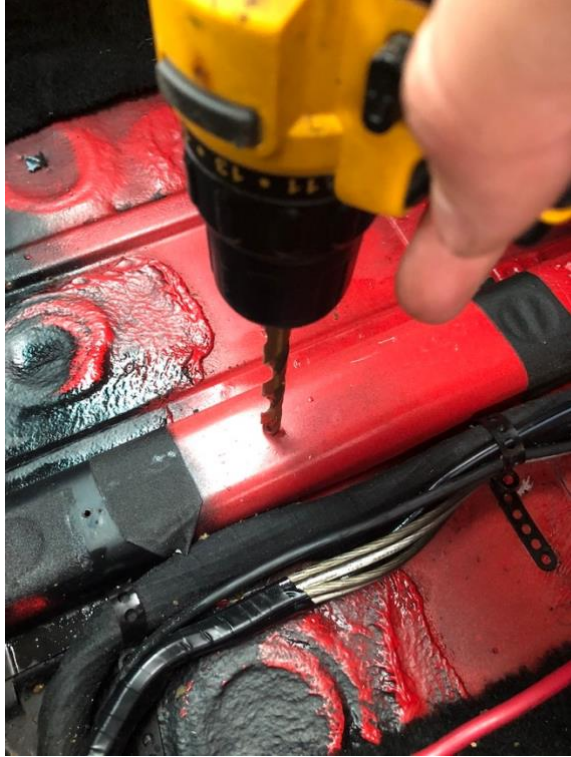
1. Remove floor mats
2. Remove sound deadening from floorboard area



3. Install floorboard and mark center of two holes to be drilled



4. Remove floorboard and drill marked holes using 25/64" (10mm) drill bit

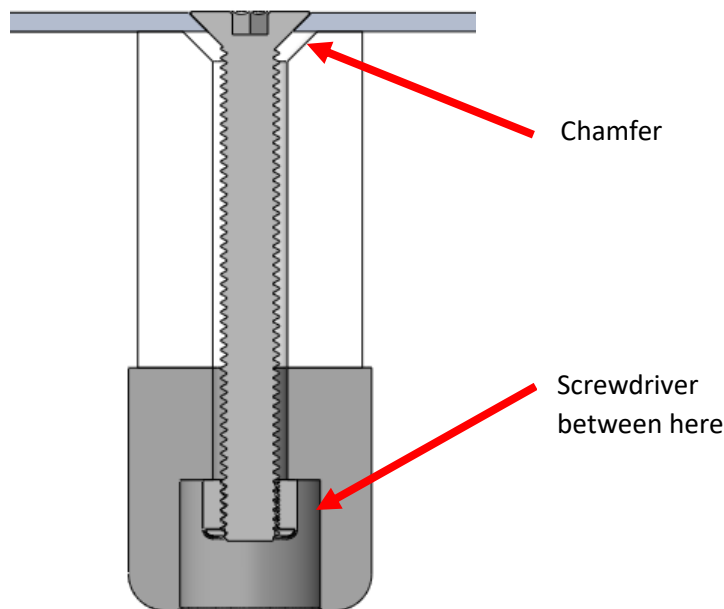


5. Install Rivnut in drilled hole



6. Install floor board and short flat head screws into newly installed rivnuts
7. Tighten screws to engage rivnut. A constant force will be felt while the rivnut is compressing, stop once torque peaks
8. Remove screws and inspect rivnut to ensure it is fully compressed and not loose within the frame rail, repeat step 7 if necessary
9. Assemble spacers onto outer edges of floor board
 - a. Shorter screws and spacers are positioned towards the center of the car
 - b. Longer screws and spacers are on the outside closest to the doors
 - c. Apply a small amount of Loctite on the screw, it helps to use a flat head screwdriver between the nut and inside of the rubber spacer to prevent it from rotating

Note: Ensure chamfer on spacer is facing the floor board, this adds clearance for the screw in order for it to sit flush



10. Install floorboard into car
11. Secure for final installation
12. Repeat all installation steps for other side of vehicle

End of Procedure